

Synthetic Sleeper

Aims

- 1) Synthetic sleeper featured with easy high durability are generally used for turnout and bridge.
- 2) Needs at railway construction sites can well reflected to the products by offering composite sleeper by Sumihatsu itself as a turnout manufacturer.
- 3) Variety of customers' need can be satisfied enriching the functions of devices by Sumihatsu aiming to an integrated railway device manufacturer.

Features

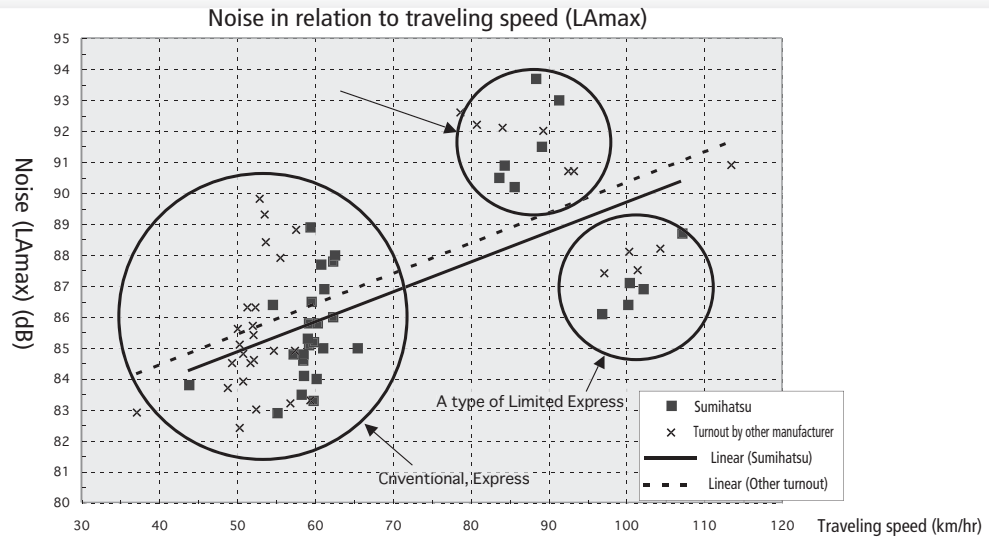
- 1) Any shape can be manufactured by die forming, including small size, mono-block forming with ballast to improve roadbed resistance.
- 2) Less noise and vibration is achieved.

Structures

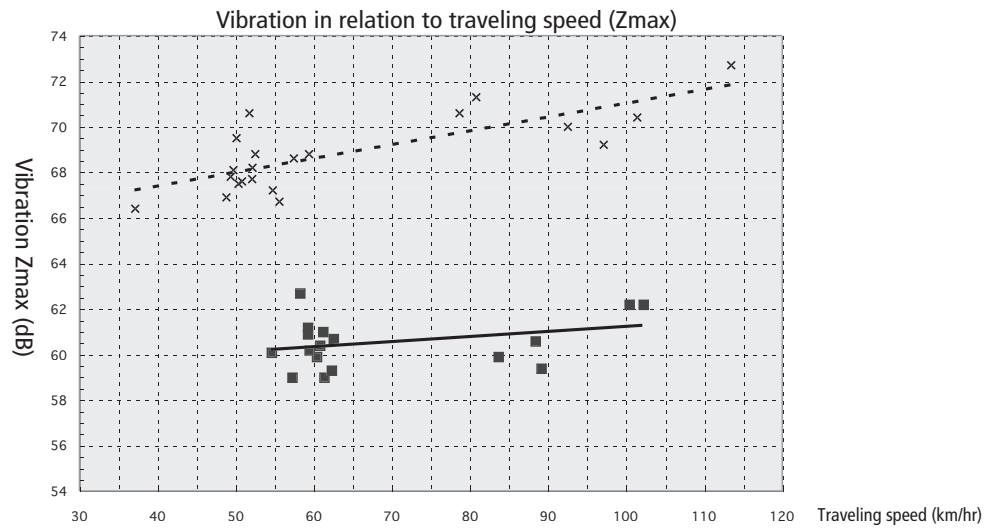
- Tempered glass fiber and polyurethane foam are formed together.



Noise



Vibration



Sleeper performance

